

## LONIX WATER METERING SOLUTION

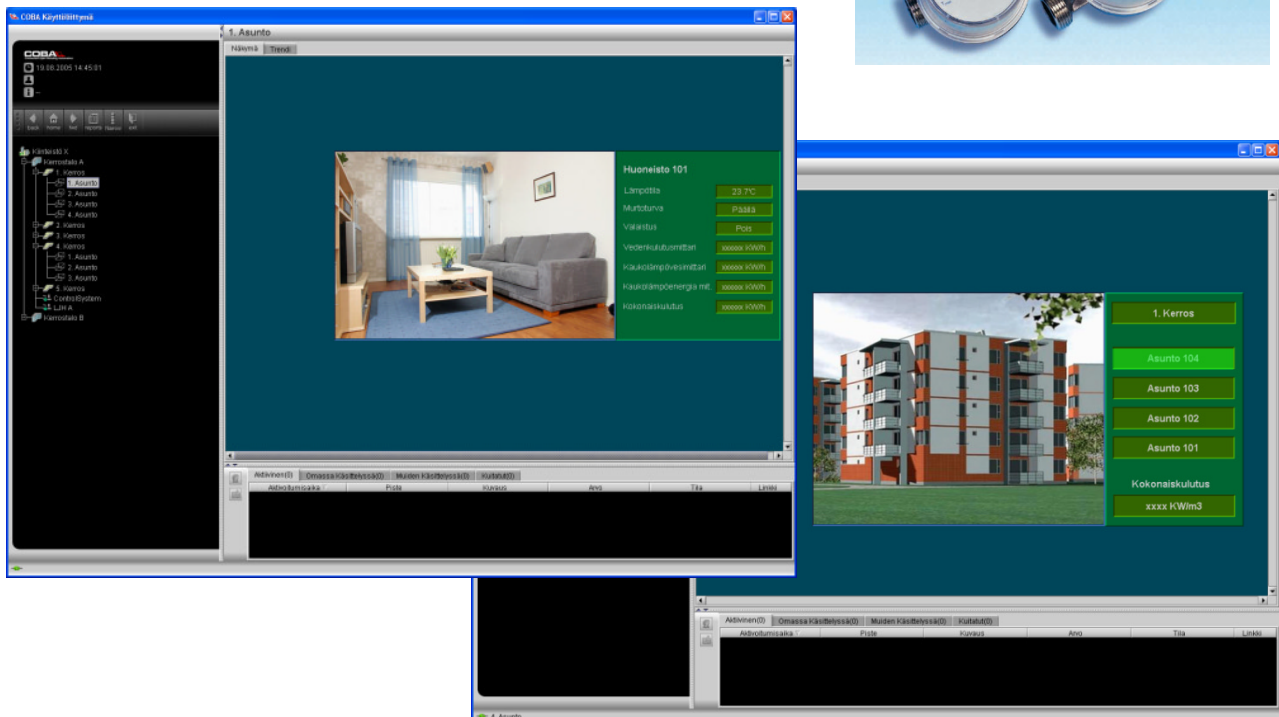
Lonix water metering solution is designed for measurement of domestic hot water consumption in apartment buildings. The solution is easy to implement as a simple standalone solution, where the consumption data of each apartment is read using one central LCD display. The water metering solution can also be integrated with the building automation system. The system configuration easy to do using the local display. The consumptions are read using the same panel.



The system can be connected to remote control via Internet. The consumption data from the remote location is received through IP-connection or GPRS-connection. When the system is integrated with the building automation system, all systems can be connected to the same control room application.

### BENEFITS OF THE SOLUTION:

- Easy to design, to install, to use and to maintain
- Extremely cost-efficient solution
- Remote monitoring in many different ways
- Easy to extend to building automation
- Reliable and secure to use



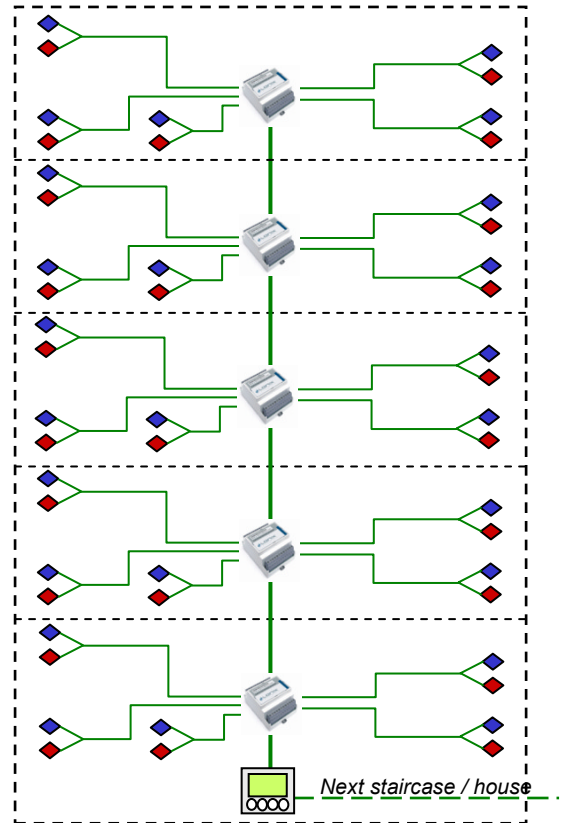
## SYSTEM DESCRIPTION

Each apartment includes two impulse water meters, one for hot and one for cold water (e.g. Elster SVI 1511 or alike). 10 water meters can be connected to one Lonix Counter Module. The Module(s) placed on the floors are cabled to the LON bus. Modules require 24V DC/AC input, which is taken using the other pair of LON bus (NOMAK 2X2X0,5+0,5). A dedicated cable is pulled from water meters in each flat to the Counter Module (e.g. KLMA 4x0,8).

The system can be easily connected to remote monitoring. Reading of consumption measurements is done by using fixed IP-connection or GPRS-connection. The remote reading can also be done with the normal web browser.

When the water metering system is integrated with building automation, all systems can be connected to the same user interface (e.g. COBA).

Electrical contractor provides and pulls the cables and the power supplies. Electrical contractor couples the cables to water meters and to Counter Modules. System commissioning is done by authorized Lonix integrator.



## Water metering solution per apartment

- Easy to design
- Easy to connect and install
- Easy to maintain
- Easy to extend to building automation

Example of the figure:

### 25 apartments in five floors

- 50 impulse water meters
- 5 counter modules Lonix 1000C
- Local display Lonix LCD-CTR
- Transformer 230/24V

### Optional features

- Remote reading of consumption data through IP-connection or GPRS-connection

### Contact and more information:

Anu Kätkä  
 +358 400 969604  
 anu.katka@lonix.com

